

In This Issue

- Annual Meeting/Picnic
- Chicken BBQ
- From the State

Board of Directors

Brian Davis
President 717-528-4485

Debra Stock -
Secretary /Treasurer-
717-624-2592

Sally Scholle First Vice
-President 717-359-9472

Earl Stock Second
Vice- President 717-476-5920

Brock Wideman
717-752-5402

Robert Niner
717-334-1937

Bob Clowney
717-334-7269

Frank Penning
717-465-8115

Gene Moose
717-334-5684

Amy Welker
717-580-0562

Margaret Barra
717-624-3899

District 9 Director

Kevin Mountz
717-377-0297
ROD Ken Sechrist
717-409-9170

Local News First!

Adams County Activity[□]

Local farmers working together

Welcome New Members: **Deborah Moose, Alex Crouse, Samuel Goldberg, Kevin Benner, Karen King.**

Annual Meeting/Picnic

Mark your calendar for **August 18, 2024**, as the ACFB will be holding their Annual Meeting / Picnic on this date. The picnic will be held at the York Springs Lion's Pavilion, 406 Main Street, York Springs, PA. 17372, starting at 1:00 pm. Fried Chicken, paper goods, and water will be provided. Cost is \$5.00, to cover the cost of the meat. Bring a covered side dish or dessert, and bring your thoughts on a possible policy.

The monthly board meeting will be held July 11 (due to the 4th being on the Thursday we would usually have it), August 1, and September 5 starting at 7:30 pm at the Ag Center in Gettysburg, PA.

CHICKEN BBQ

The third annual Chicken BBQ again was a great success. Total raised was \$1984.65 after expenses. A huge thank you to everyone that sold ticket, volunteered, made and donated baked good, and donated items to help this fundraiser be a success. If you have an idea for a fundraiser for us to try, contact a board member with your idea.

Looking for a few good policies

One of Farm Bureau's most important activities is policy development. Members of each county Farm Bureau submit ideas and suggestions regarding issues that affect the farming community. These ideas are written as resolutions and voted on at the county annual meeting in November. Topics cover a wide range of ag issues including wetland management, wild game, commodities, animal health, vehicles, health and safety, taxes and water quality. If an issue involves ag in any way, it can be developed for policy. After the county meeting, voting delegates from each county attend the state

Calendar of Events

July

4- 4th of July

8-12 – New Member Sign-up week

11 Board Meeting

23-27 –South Mountain Fair

August

1 – Board Meeting

13-15 –Ag Progress Days Day

18- Annual Meeting/ Picnic

September

2- Labor Day

5- Board Meeting

16- WLC ICE Summit

Service Provider Quick Reference

Nationwide Insurance Providers

Pabody Insurance
Larry Blount

147 N. Fourth St.
Gettysburg
717-339-0055

Jillian A. Mylet
Insurance

Jillian Struble

147 Carlisle St.
Gettysburg
717-334-1161

Adamik Insurance Agency

Wilson Bounds
5356 Baltimore Pike
Littlestown, PA. 17340
717-359-7380

annual meeting and decide by majority vote which resolutions will be adopted as Pennsylvania Farm Bureau policy. While policies are not laws, they're supported legislatively by Farm Bureau at either the state or national level. Ideas, issues, and topics can be submitted at any time of the year via anyone on the county Farm Bureau board of directors or to policy chair Sally Scholle at 717-359-9472. Bring your ideas to the picnic on August 18,2024.

Remember to Renew your Membership.

Farm Bureau affects so many areas besides crop and livestock farmers. The policies that are passed and brought to the attention of the Pennsylvania legislators affect so many people from wineries, horse owners, to produce owners and sellers to commodity companies. If you know someone that isn't but should be a member, ask them to join, Farm Bureau is there to help all the agricultural community. Renewal notices will be going out soon, so remember to renew your membership and check with your neighbor to see if they renewed their membership or would like to become a member. July is the start of the membership drive.

Pa. Farm Bureau Stores are open !

Both Pennsylvania Farm Bureau stores for clothing and signs are up and running. The sign store is open until July 31st. This plan for the sign store is to be open the months of January, April, July and October. The clothing store is open 24/7/365. Here are the links to access both stores. Flyers will be going out to all members, but please get the word out to everyone about this store. I just placed my order and it is super easy. Never too early to start

your Christmas shopping. 😊

Clothing Link - <https://pa-farm-bureau-retail-store.itemorder.com/>

Sign Store Link - <https://pfbmembersignshop.itemorder.com/>

The Adams County Conservation District (ACCD) is looking to fill an Agricultural Conservation Technician position. This position will work primarily with ACCD's Agricultural Conservation Assistance Program (ACAP). There are more details about the position including a job description and application instructions at the link below. Please feel free to share the posting with potential applicants that you think would be qualified. The posting may close as early as **Friday, July 12, 2024**, depending on the applications received. Thank you for your assistance.

https://workforcenow.adp.com/mascsr/default/mdf/recruitment/recruitment.html?cid=55f9c57b-cdfc-4081-8a5a-d8102543d4aa&ccId=19000101_000001&jobId=485487&lang=en_US

Thank you.

PFB Health Services
1-800-522-2375

Check us out of
Facebook

Visit our web page.
www.pfb.com/adams

Newsletter Editor
Deb Stock
359 Brickcrafter Rd
New Oxford, PA.
7350
717-624-2592
edstock1005@gmail.com

BE SAFE!

Farming is a
profession of hope.

Brian
Brett

I'd rather be on my
farm than be
emperor of the world.

George
Washington

No one works harder
than a farmer except
maybe their spouse.

What's New with Manure Management Plans?

Many of you know all about manure management plans, but did you know that a new template for writing manure management plans was released this spring? In Pennsylvania, some kind of manure management plan is required for all farms that have animals that generate manure and all farms that land apply manure or agricultural process wastewater. On April 27, 2024, the Pennsylvania Department of Environmental Protection (PA DEP) released a new manure management supplement that provides the new template for writing manure management plans. This supplement includes a new Manure Management Plan Short Form. This three-page Short Form has a contact information section, a general information section, and a series of yes or no questions about the farm. If a farmer can answer "Yes" or "Not Applicable" to all 11 questions, the Manure Management Plan Short Form can be used as the operation's manure management plan. The full Manure Management Plan Workbook only needs to be completed if a farmer answers "No" to any of the 11 questions. This new Short Form makes it easier for operations with lower amounts of animals to be in compliance with Pennsylvania's manure management regulations.

The longer Manure Management Plan Workbook has also been updated in the new manure management supplement. Among other changes, it has new worksheets to evaluate animal numbers, agricultural process wastewater, and animal concentration areas (ACAs).

Any manure management plans developed after April 27, 2024 need to follow the template in the new manure management supplement. If you had a manure management plan developed before April 27, 2024, that plan remains valid as long as there are no significant changes to your operation.

The new manure management supplement can be found by going to PA DEP's website and searching for "Manure Management". Also, the Adams County Conservation District can provide you with a paper copy. Manure management plans can be written by farmers themselves or by a technical service provider. If you have any questions about the new manure management supplement, please contact the Adams County Conservation District at (717) 334-0636.

Anastasia Miller
Chesapeake Bay Technician

From the State

Farm Bureau Testifies in Support of Western PA Animal Diagnostic Lab

Farm Bureau was invited to testify at a May 17 informational meeting held by the Pennsylvania House Agriculture and Rural Affairs Committee on Gov. Josh Shapiro's proposal to create a new Pennsylvania Animal Health & Diagnostic System (PADLS) laboratory in Western Pennsylvania. Former Farm Bureau board member and current Pennsylvania Animal Health & Diagnostic Commissioner Glenn Stoltzfus offered the organization's strong support for the proposal, noting the following benefits of creating such a facility:

- Currently, the westernmost lab in the PADLS system is located in State College. Many farmers in western Pennsylvania cannot access these services as quickly and easily as their counterparts in the central and eastern regions

If you don't love farming or your land, you shouldn't be a farmer.

Jannie
Struis

Good farmers, who take seriously their duties as stewards of creation and of their land's inheritors, contribute to the welfare of society in more ways than society usually acknowledges, or even know. These farmers produce valuable goods, of course; but they also conserve soil, they conserve water, they conserve wildlife, they conserve open space, they conserve scenery.

Wendell
Berry

Agriculture... It's more than a part of life, it's a passion, a

of the Commonwealth can. Establishing a lab in western Pennsylvania would create a level playing field for farmers across the state by providing greater access to PADLS services for producers west of Interstate 99.

- An investment in a new western Pennsylvania diagnostic lab can be an economic growth driver for a region in need of expanded opportunities for its residents. Strong infrastructure investments of this nature will help agriculture, particularly the livestock sector, do its part to support and accelerate such development.
- Creating a new western Pennsylvania animal diagnostic lab can help the state not only improve access to critical testing resources, but also help to address the shortage of veterinarians in this region. Having a PADLS lab in closer proximity will make the jobs of veterinarians, especially those caring for large animals, currently serving the region easier and at the same time remove a barrier to attracting new veterinary professionals to live and work in western Pennsylvania.

The Farm Bureau looks forward to supporting this initiative as the state budget process continues.

PDA Bureau of Animal Health Updates State Dairy HPAI Quarantine Order in Response to USDA Action

The Pennsylvania Department of Agriculture (PDA) Bureau of Animal Health, in conjunction with the Center for Dairy Excellence, has convened regular updates on the evolving situation with highly pathogenic avian influenza (HPAI) in dairy cattle in nine U. S. states, affecting 43 premises. At this writing, Pennsylvania continues to be dairy HPAI-free, but state animal health officials caution that all producers should remain vigilant in updating their biosecurity plans to meet the potential threat.

New data now suggest that the HPAI virus was spread from wild birds to cattle beginning in late 2023 and has been spreading in cattle since then. PDA is advising dairy farms to protect their cattle as much as possible from wild birds to prevent further virus spread among dairy farms. There is still just one human case reported to date, but mutations in the virus suggest bovine adaptation. Milk and mammary tissue carry the highest viral load in cattle. There is some evidence of limited respiratory shedding.

The PDA's April quarantine order was revised May 9 to mirror the succeeding USDA order's terms. All lactating dairy cattle being transported interstate must be tested (except for those moving directly to slaughter). All non-lactating cattle from affected states must be tested within 7 days of movement. PDA has developed a response protocol to quarantine positive premises if needed.

PDA also reminds farmers to use their premises ID number when reporting suspect cases to get testing reimbursement. Farmers should work with their vet to initiate testing if they suspect HPAI. PDA is currently drafting guidelines for fairs and exhibitors. Out-of-state animals must be tested prior to entry. USDA will be offering an aid package work up to \$28,000 for affected farms to use for PPE, heat treatment of waste milk, and reimbursement for production losses. The CDC is working with state health departments to proactively distribute PPE. PDA is working with the PA

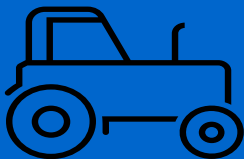
lifestyle, a resilient community that works hard to feed the world.

Ryan
Goodman

Life on a farm is a school of patience; you can't hurry the crops or make an ox in two days.

Henri
Alain

Money can't buy happiness, but it can buy tractors..... which is pretty much the same thing.



Dept. of Health to prepare. PDA also outlined sampling basics for farmers who need to submit them.

Please see the Federal Affairs Update for links to Farm Bureau resources on this topic.

PDA-DEP Food Processing Residuals Work Group Holds Final Meeting; Report, Legislation to Follow

The Pennsylvania Department of Agriculture (PDA)/Pennsylvania Department of Environmental Protection (DEP) work group examining potential changes to the state's laws/regulations/policy governing the use of food processing residuals (FPRs) held its final meeting on May 1 to review and offer comments on its draft final report. Farm Bureau provided its observations and joined several other stakeholders in submitting additional written comments to the agencies. The draft report is now under internal review and is expected to be finalized in the near future.

At the same time, the legislative members of the work group (Reps. Paul Friel (D-Chester), Barb Gleim (R-Cumberland), and Paul Schemel (R-Franklin)) are expected to soon introduce legislation on the topic of FPRs, but it is unclear how closely that language will match the content of the work group's report. Farm Bureau will continue to work with all stakeholders to ensure that FPRs remain a viable option for farmers who wish to utilize them, and that those farmers are not subject to frivolous complaints and harassment because of a given community's perception of their use.

State Conservation Commission Holds Business Meeting

The State Conservation Commission (SCC) discussed the following items at its May business meeting:

- Currently, there are over \$70 million in signed Agricultural Conservation Assistance Program (ACAP) contracts, with Lancaster and several other counties having fully committed their funding. SCC staff believes that the program can support a \$50 million annual funding stream. The first ACAP state conference is being planned for later this year in State College.
- The governor's budget office has asked that all ARPA ACAP funds be allocated by June 30 in order to have sufficient time to reallocate remaining funds if necessary (about \$540,000 to be obligated by that date).
- A Farm Lane program is being added to ACAP to provide engineering and technical support to farm lane traffic improvements, along the lines of the existing Dirt & Gravel Road Program.
- The SCC approved a \$6.7 million Nutrient Management Program Fund budget for FY 2024-25 which focuses on the key role of conservation districts in that program, and also approved reimbursement of PACD expenses for doing ag planning work.
- The SCC discussed plans for changes to the REAP tax credit program for 2024-25. The key change will be a shift in focus with drone usage toward cover cropping applications and away from herbicide/pesticide spraying, as well as away from thinning out or cutting trees in silvopasture. The intent of these and other changes is to spread dollars more evenly throughout the state and make REAP more accessible to smaller farmers.

KEEP YOUR EQUIPMENT WORKING HARD

AGRICULTURE / TRUCKING / EXCAVATION

- Reduce Down Time
- Decrease Wear and Tear on Parts
- Increase Fuel Efficiency

Dan Miller
717-465-6738
danmiller4@verizon.net



DREAM IT.
Own It.

Loans for farms, land
and country properties.

 **FARM CREDIT**
888.339.3334 | HorizonFC.com

SMALL BUSINESS

Do you have a Business?

Would you like to advertise in the Newsletter?

The Adams County Farm Bureau would love for you to advertise in their newsletter. A full page ad cost \$100.00, half page ad cost \$60.00, and a quarter page cost \$40.00 per newsletter.

Your ad will be seen by all Adams County Farm Bureau Members. Contact Deb Stock at edstock1005@gmail.com



Nationwide is on *your* side. Visit a Nationwide Agent today!

Jillian Mylet
Insurance
Jillian Struble
147 Carlisle St,
Gettysburg, PA 17325
- 717.334.1161
-
mylet@nationwide.com

Pabody Insurance
Larry Blount
147 N 4th St.,
Gettysburg, PA 17325
- 717.339.0055

John Adamik
Insurance Agency
Wilson Bounds
5356 Baltimore Pike
Littlestown, PA. 17340
717-359-7380

Are You Turning 65 This Year and Going on Medicare?



Choosing your Medicare plan can be overwhelming. It can be hard to figure out what you want, or more important, what you need.

Farm Bureau's experienced and trained staff are ready to help. At no cost to you, we can:

- Answer your questions
- Explain and compare options
- Work within your budget
- Help with informed Medicare coverage decisions

Knowledgeable. Helpful. Dedicated.

To check availability in your county call **800.522.2375**.

Pabody Insurance

147 North Fourth St.

Gettysburg, Pa. 17325

Now Offers

NAU Crop Insurance

Full line, including Dairy Revenue Protection

For more information, call Larry Blount

717-339-0055





Protect your next with the Ag Insight Center

We feed your need for insights and information with access to the Ag Insight Center, providing members with the latest resources, innovations and information to help drive your future business success.

Scan here to learn more:



Nationwide and the Nationwide N and Eagle are service marks of Nationwide Mutual Insurance Company. The Farm Bureau and FB are trademarks of the American Farm Bureau Federation and are used with permission under license by Nationwide.
© 2022 Nationwide CMO-1329PA.1 (10/22)



Local Small Tractor and Implement Supplier Located in Biglerville, PA

Call: **717-253-1736** for Wayne or **717-752-7837** for Aaron

Specializing in:

- Dirt Dog Attachments (Box Scrapers, Landscape Rakes, Tillers, Mowers)
 - Danuser (Intimidator Post Pullers, Pounders, Augurs)
 - Ideal (Trailer Movers, 3pt Attach, ATV/UTV Accessories)
 - Baumalight (Stump Grinders, Forestry Mulchers)
 - If You Have a Need, We Can Get a Price!





Member Benefits

Pennsylvania Farm Bureau knows you work hard for your money and your membership should too. Visit www.pfb.com/services or scan the QR code to see how to get your share of **\$2.7 million in annual savings**.



To redeem discounts, use the required codes, websites, and/or phone numbers found by logging into the Members Only website at www.pfbmembers.org.

Member Benefits are subject to change without notice. Membership Dues Are Non-Refundable.

Home and Auto



www.pfb.com/ford
to download certificate
Must be a member for 30+ days;
rebate not always stackable,
some exclusions may apply

\$500.00 off exclusive Ford trucks



Code: 11361045
National Fleet Discount



Must show membership card
Exceptions may apply



Code: PFB-7555-024
855.692.8330
www.pdnrg.com/en/us/tp/digital/pfb_7555



Code: 1586181PHL
www.StaplesAdvantage.com
Online purchases

Farm and Business



Account# 855488417
www.grainger.com/farm-bureau

Renewals code: PAFB
New member code: PAFB39
www.lancasterfarming.com
Renewals 10% off



1.800.8-SADDLE
Membership number required
10% off



www.pfb.com/caseih
to download certificate



www.pfb.com/cat
to download certificate
30 day waiting period



www.johndeere.com/farm-bureau
Rotrum Membership with John Deere Rewards Program
30 day waiting period



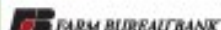
855.626.4088
www.pfb.com/shibley-energy
Membership number required

PFB Member Service



800.522.2375
www.pfb.com/healthservices

Financial and Insurance



www.farmbureau.bank.com



717.540.4332
www.hazenlawgroup.com



Nationwide® offers a variety of insurance and financial services to Farm Bureau members including farm*, auto*, home*, pet*, travel*, powersports, commercial and life insurance.
*Select discounts may apply.

To learn more, contact your local Nationwide agent or visit Nationwide.com/pfb.

Travel



Special Rate ID: 00209780
800.258.2847



Corporate Rate: 8000002941
877.670.7088



AWD Disc. Code: A298838
800.331.1212
www.avis.com/pafb



BCD Offer Code: Y775738
800.527.0700
www.budget.com/pafb

Health and Wellness



Code: Group 946
www.scriptsave.com



800.974.7036
www.myfreepharmacy/Pennsylvania

Additional Benefits

Save even more with County Farm Bureau Local Discounts!

For a complete list of discounts offered by +375 locally-owned businesses in nearly 50 counties visit pfb.com/localdiscounts.
Local discounts not offered in all counties.

Pennsylvania Farm Bureau Member | Deals Plus



pfb.enjoymydeals.com

Publication



We have Hay Equipment in Stock. Call for details.

Vermeer Corporation reserves the right to make changes in engineering, design and specifications, add improvements, or discontinue manufacturing or distribution at any time without notice or obligation. Equipment shown is for illustrative purposes only and may display optional accessories or components specific to their global region. Please contact your local Vermeer dealer for more information on machine specifications.

Vermeer and the Vermeer logo are trademarks of Vermeer Manufacturing Company in the U.S. and/or other countries. © 2021 Vermeer Corporation. All Rights Reserved.

**Are You Ready To
Buy A Tractor?**

**LS TRACTOR IS
READY TO MAKE
YOU A DEAL!**

LS Tractor USA

**NEW
PRODUCT**



Barlow Ag Service & Sales, Inc.

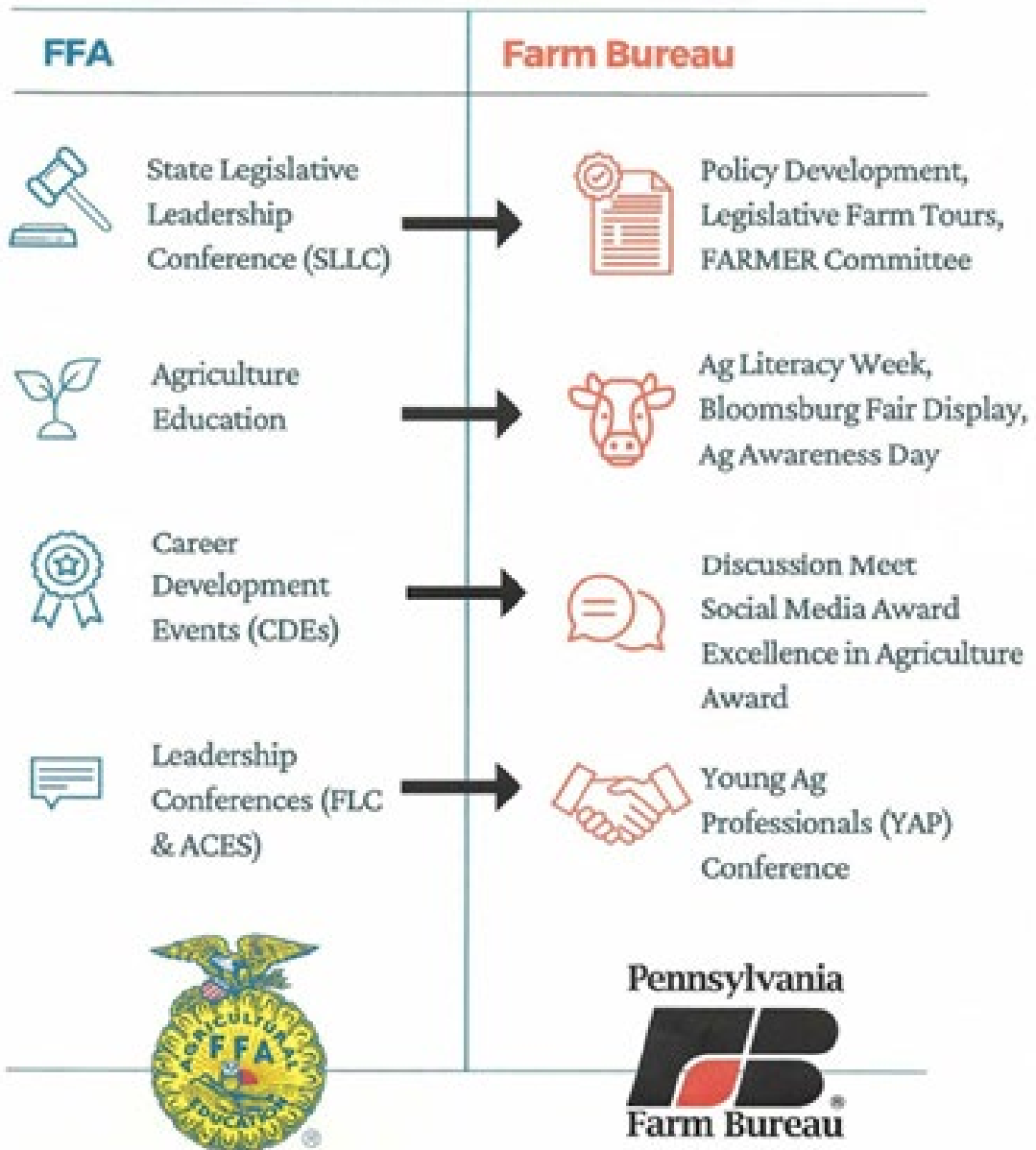
676 Barlow Rd., Gettysburg, PA 17325 • (717) 334-8418 • www.barlowagservice.com

Turn your **blue and gold** into **FARM BUREAU!**



Scan to join now!

Young Ag Professional Membership for ages 18-35



Adams County Farm Bureau
359 Brickcrafter Rd.
New Oxford, PA. 17350
17236

Presorted Standard.
U.S. Postage
Mercersburg, PA

Paid Permit # 15