

Susquehanna County Farm Bureau Directors

| | |
|---------------------------------------------------|------------------------------------|
| David DeLeon, President.....570-853-3520 | Joseph Plonski.....570-765-2901 |
| Jim Barbour, 1st V. President.....607-435-0830 | John Bencoter.....570-833-4250 |
| Donna Williams, 2nd V. President.....570-942-6348 | William F. Curley.....570-991-1936 |
| Michelene Klim, Secretary.....570-289-4756 | Joseph Decker.....570-756-2657 |
| Emma Hinkley, Women's Leadership.....570-289-4943 | Thomas Helmacy.....570-833-2138 |
| | William Shay.....570-396-4752 |

Non-Director
Jessica Prusinowski, Treasurer.....908-310-0905

People Serving You

Nationwide Appointed Agencies

| | |
|---------------------------------------------------------------|--------------|
| R. Leet Agency.....18 Como Rd. PO Box 300, Lakewood, PA | 570-789-2666 |
|321 Main St., Hallstead, PA..... | 570-465-3296 |
| Little & Nelson Ins.....66 Public Ave, Montrose, PA..... | 570-278-1151 |
|1344 Main St, Susquehanna, PA..... | 570-853-3372 |
| Manci Ins. Agency.....35 E Tioga St., Tunkhannock, PA | 570-836-3372 |

Susquehanna County Farm Bureau

Liz LoSchiavo, Editor, nefamilyfarming@gmail.com
1089 Coleman Road, Montrose PA 18801

**Presort Std.
U.S. Postage Paid
Montrose, PA 18801
Permit #62**



SUSQUEHANNA COUNTY FARM BUREAU

April 2023

Featured SCFB Members: *The Empet Family*

The Rick and Dana Empet family in Kingsley operates a 6th generation dairy farm. Rick and Dana along with their children Alex, Chelsea and Aiden and one hired employee farm 400 acres of mixed grass hay, high moisture corn and corn silage to feed their 325-head herd of primarily Holstein with a few Jersey and Guernsey dairy cows. In addition to helping on the farm, Dana further utilizes her Cornell BS and Ohio State MS degrees providing nutritional consulting to other regional dairy producers through Empet Dairy Consulting LLC.

The Empets have been active SCFB members for many years, participating in Ag Literacy week with both Susquehanna County Farm Bureau (SCFB) and the Susquehanna County Dairy Promotion Team, visiting kindergarten through second grade classrooms in Susquehanna County reading agriculture related books and conducting agriculture related activities with the students. In 2008 Rick and Dana represented Susquehanna County in the PFB Young Farmer and Rancher Committee and were PFB Achievement Award winners representing Pennsylvania in the National Contest in San Antonio, TX. PBS's American Portrait series featured the Empet family in March of 2021 showcasing a typical day on their dairy farm.

The Empet family's present and future look to be as filled with agricultural advocacy and industry involvement as is their past. Dana is presently serving on the Leadership Council of Maryland & Virginia Milk Producers, their milk buyer.



Alex, a senior at Mountain View High School, has plans to pursue a degree in Dairy Science after graduation and Chelsea is continuously promoting dairy and highlighting the local dairy industry at various events, even taking calves to local preschools to educate children on the dairy industry as Susquehanna County Dairy Ambassador. Aiden shares his family's passion for the dairy industry, bringing home the top prize as the champion of the 2022 PA Jr Holstein Jr Dairy Jeopardy contest.

In spite of all the time dedicated to promoting agriculture the family manages to stay active in both 4-H and Jr Holstein Club activities, showing not only dairy animals but also market lambs and hogs and participating in Dairy Quiz Bowl. Oh, and they even mix in some high school sports in their free time. SCFB is exceptionally proud to count the Empet family amongst its members.

Local Discounts for Farm Bureau Members in Susquehanna County

SCFB Members - show your membership card at these participating businesses and ask about the Farm Bureau discount. www.pfb.com/localdiscounts

Andre & Son, Inc. - True Value (Montrose) - 5% off any in-stock store items not already on clearance or promotional pricing

Auto Plus (Great Bend) 10% off

Barhites Sales & Rentals (Clifford) 10% off all rentals, 5% off all sale items in-stock/shop repairs, 5% off parts, 15% off labor

Blue Stone Pizzeria (Hallstead) 10% off all menu items

Flynn's Hardware/Flymm's Stone Castle 10% off animal feed, Lawton

Gerard E. Shinn Construction (Uniondale) 5% off any contracted work

Glezen's Power Equipment Inc. (Hallstead) 10% off parts

J&J Springs (New Milford) 10% off all water delivery to homes

JDE Salon (Montrose) 20% off all retail products

Liberty Carpet, Inc. (Hallstead) 10% off in-stock & special-order flooring, 5% off hardwood

Little Leaf Natural Products (Montrose) 10% off everything; must show membership card

Maloney's Pub & Restaurant (Hallstead) 10% off food on Sunday and Monday only

Montrose Produce (Montrose) 5% discount

New Milford Hardware (New Milford) Trade Discount - up to 10% off depending on item

Nicholson Tire Service 5% off tires and labor, Nicholson. Available to Susquehanna and Wyoming County Farm Bureaus

Pump N Pantry All stores except Troy - buy one get one free hotdogs (Kunzler's from Lancaster)

Rhonda's Country Heart Décor (Montrose) 10% off everything in store

Rustic Roost Café free drink with meal purchase, Kingsley. Available to Susquehanna and Lackawanna Farm Bureaus

Scarfalloto Hometown Market (Montrose) 5% off total order

Speakeasy Saloon & Resort (Union Dale) 10% off any dinner and room rental

Stone's Trustworthy Hardware (Great Bend) 10% regular priced items; some exclusions apply

Strauss Chiropractic/Northeast Nutrition (Kingsley) Initial consult, complete exam & x-rays for \$25 (normally \$175-250)

Summit Workwear (New Milford) 15% off boots and workwear

Timberline Lawn and RV (Montrose) 10% off in-stock or ordered parts; \$100 minimum purchase

Wandering Trails Veterinary Care 10% off services excluding medications, Towanda. Available to Susquehanna, Wayne, Bradford, and Wyoming Farm Bureaus

William Shay Flagstone 10% off 10 by 10 Patio Package, Thompson. Available to Susquehanna and Wayne/Pike Farm Bureaus

AG Promotion and the TASK Conference

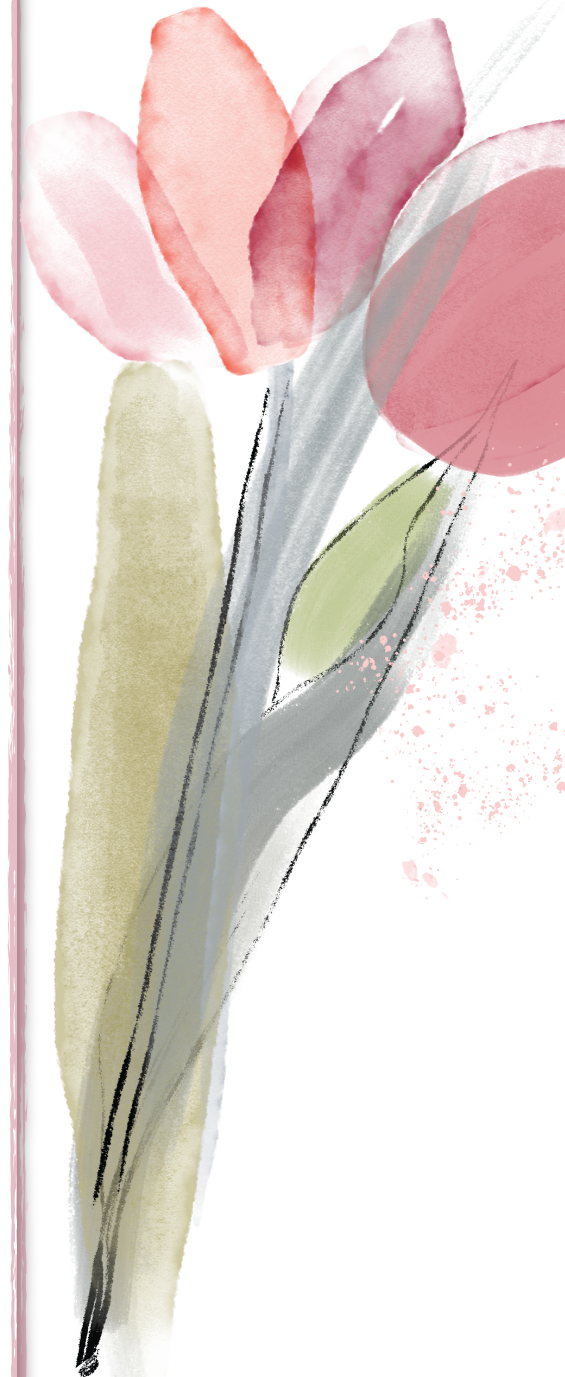
The state Ag Promotion Committee is a resource which assists county farm bureaus in creating programs and activities to educate folks about agriculture. In working alongside the PA Friends of Ag Foundation, it is another advocate for agriculture.

Each year it organizes what it has labeled a TASK Conference standing for "Together Advocacy Stimulates Knowledge."

This year's conference was held in State College in early March. The principal speaker was Barbara Payn who is a professional speaker in the agriculture, food, farm and nutrition arenas in looking to give voice to the people who feed the world. She strives to "build a stronger connection between the farm gate and food plate." Those in attendance were treated to a most entertaining and worthwhile experience.

In addition, there were breakout sessions on engaging volunteers, championing agriculture and tackling tough topics.

Attending the conference from Susquehanna County Farm Bureau were Emma Hinkley, David and Mania DeLeon, Jim and Kim Barbour. Jim is the state chair of the Ag Promotion Committee.





Are You Turning 65 This Year and Going on Medicare?



Choosing your Medicare plan can be overwhelming. It can be hard to figure out what you want, or more important, what you need.

Farm Bureau's experienced and trained staff are ready to help. At no cost to you, we can:

- Answer your questions
- Explain and compare options
- Work within your budget
- Help with informed Medicare coverage decisions

Knowledgeable. Helpful. Dedicated.

To check availability in your county call **800.522.2375**.



Protect your next with the Ag Insight Center

We feed your need for insights and information with access to the Ag Insight Center, providing members with the latest resources, innovations and information to help drive your future business success.

Scan here to learn more:



Nationwide and the Nationwide N and Eagle are service marks of Nationwide Mutual Insurance Company. The Farm Bureau and FB are trademarks of the American Farm Bureau Federation and are used with permission under license by Nationwide.
© 2022 Nationwide CMO-1329PA.1 (10/22)



SCFB ANNUAL SPRING MEETING

April 29, 2023
Montrose Bible Conference, Lake Avenue Dining Hall

9am Social Time
Buffet Brunch at 10am

“Meet the Candidates” Forum

A great opportunity to hear from the candidates on this year’s primary ballot Always a good variety of items in the Chinese Auction to benefit Ag Education

Brunch is \$15 Please pay at the door
Reservations by April 22 by contacting David at 607-768-9893
ddeleon.psu@gmail.com, Donna at 570-942-6348,
or Jim Barbour at 607-435-0830, jim@barbourfarms.com

Ag Literacy Week Photos:



Ag Literacy Week

“The Day The Farmers Quit” is the PA Friends of Ag Foundation 2023 Ag Literacy book this year. It is an encouraging story about a boy who learns he can’t live without the hard work of his farmer friends. How this young boy sets out to save his town and get the farmers to return from their vacation points out to children the importance of farmers in their community.

Susquehanna County Dairy Promotion and Susq Farm Bureau continue to support this worthwhile program. Delivering the message to all 70, K-2 classrooms in 8 schools while addressing over 1300 students takes many volunteers.

This year the following contributed to the program: Dairy Princess Holly Harvatine, Alternate Princess Courtney Marvin, Dairy Ambassadors Chelsea Empet, Ava Hughes, Kaylee Walker, Dairy Maids Kali Harvatine, Maci Harvatine, Emmory Coy-Puzo and Lynsey Zielinski. Also Tyler Bianchi, Lizzie Walsh, Sophia Bianchi, Alexis Sebring, Ella Fearnley, Hannah Fearnley, Julia Briechele, Charley Smith, Rebecca Haley, Zachary Heath, Chloe Baldwin and Jilly Gustin. Adults John Bencoter, Dave DeLeon, Caitlin Williams, Nicole Bianchi, Debbie Earley, Kathy Walker, Dana Empet, Peggy Empet, Julie Harvatine, Mary Chidester and Olivia Zielinski.

A successful program depends not only on folks offering their time but also to someone to put the program together, making contacts and following through with all the schools in our county. For this Susquehanna County and Ag Literacy and Agriculture in general are extremely fortunate to have Evie Goff and all she does with Dairy Pro and the Dairy Princess Program. We are all most appreciative of all that Evie accomplishes.



Save these Dates:

Save the dates for upcoming SCFB events

April 4th is Farm Bureau Day at the Capitol. Farm Bureau will be well represented that day as many Farm Bureau members from throughout the state will have an opportunity to discuss critical policies with not only our local legislators but also “adopted” ones from some of our urban areas who are always looking to be educated about rural issues.

“Susquehanna County Farm and Home Day” (formerly Ag Day) **April 10**, 10am to 3:30pm at the Elk Lake School. Register by April 4th. No cost to the general public but registration required. Susquehanna County Farm Bureau will discuss policies with our legislators in room 88 at 9am. Coterra Energy supplying lunch but you must register.

Save the Date: Susquehanna County Farm Bureau Legislative Tour will be held on **August 4th**. Details to follow in our next newsletter, in local papers and on Facebook.

Learn more about Lyme disease from Dr. Daniel Cameron, April 15th, 11am-1pm at the Blue Ridge High School Auditorium. This is a free presentation. For more information, contact Commissioner Elizabeth Arnold at 570-278-6608.

