

**Juniata County Farm Bureau
Directors**

Region 1

Jeff Berry, VP: (717)513-6189
Ethan Shoop: (717)-734-0129
Mark Partner: (717)436-8929

Region 2

Dave Graybill, President
(717)363-0706
Ray Geissinger, VP: (717)348-6373
Jordan Bassler: (570)980-3906

Region 3

Cheyenne Hepner: (717)543-7273
Ken Beatty: (717)360-8228
Nick Cheran: (717)636-4662

Secretary/Treasurer:

Kyley Painter: (717)513-2916
KEPAINTER01@outlook.com

Newsletter Editor: (non-voting)

Lacey Swab: (717)994-3654
LSWAB01@gmail.com

Mission Statement: Growing communities. Many Voices. United Vision.

Vision Statement: People united around food, environment, and community.



Pictured above are readers: Kaiden, Owen, Liam, Morgan, Emily Shoop, and County Farm Bureau President Dave Graybill

Ag Literacy Week

March 17-21, 2025

On Wednesday March 19th, local 4-H Youth Members volunteered their time to participate in Ag Literacy Week. The students visited Juniata Elementary School, where they read to K-2nd classrooms. The books purchased by the Juniata County Farm Bureau were left in each of the classrooms. President Chris Hoffman had the honor of reading to the East Juniata Elementary Classrooms.

Rural Road Safety

April 13-19

By Linda Geissinger

April 13 to 19 is designated as Rural Road Safety Week. During Rural Roads Safety Week, we take time to advocate for safe driving on rural roads. With the planting season right around the corner there will be an increase in tractors and farm equipment on the road. We want to remind everyone to be cautious on rural roads and when navigating around farm equipment. Following a tractor for two miles at 20 mph takes only six minutes of your time. Next time you're behind a tractor, remember where you're headed isn't as important as your life. It takes only five seconds for you to close a gap the length of a football field if you are driving 55 mph and a tractor is moving 15 mph. Please be careful while driving the rural roads of Juniata County now and throughout the year.



Message from the President

Hello Juniata County.

Your county farm bureau has invested your dues money into education for our grade school children during the month of March. We bought books for kindergarten through 2nd grade classrooms in Juniata elementaries across the county. A big shout out to the great 4H readers that showed up and read to 15 classrooms, K-2, at Juniata Elementary School on March 19th. The books given to the children were all great books about agriculture. With the goal of showing them where their food comes from and helping them learn at a young age how important agriculture is to their daily lives.

The books went to individual classrooms as well as libraries. If you want to see the books or if your child missed out. Please let us know. We have been doing this every year. I have heard of these books being read 10+ years later by children after the farm bureau placed them in a classroom for the young readers' enjoyment.

Last fall, the county farm bureau supplied ag lessons on hydroponics to our elementary classrooms across the county. This spring we did the same with ag lessons on corn. The lessons encourage students to do some hands-on experiments with the commodity. The goal is to help them better understand their food system and the biology of the world around them.

The Chesapeake Bay Partnership's Ag Workgroup, where I serve as a member-at-large, to give farmer input on the issues, has been looking at the next phase of our Chesapeake Bay Model. We will do our best to represent farmers and farm bureau's policies as we listen and provide comment as the committee works through the process. Grant Gulibon, a farm bureau staff person, is an excellent resource to each of you on environmental issues. Grant is a source of information for me as I try to balance farming and keeping abreast of all the environmental issues in our commonwealth.

The American Farm Bureau's Environmental Issues committee, where I serve, has been working hard at comments for EPA on (WOTUS) Waters of the United States. WOTUS definitions have been a contentious issue for a long time. It appears like EPA may pull back some of its vague language in the rules. However, we need to give comments on what those language definitions should be. This is not an effort to allow anyone to pollute water or air. It is an effort to clearly define things so farmers know what the rules mean without a lawyer standing beside them reading and explaining the script.

Juniata County, you are to be congratulated, we reached our goal of 311 members and surpassed it by 7 memberships. A few more memberships are going to be paid before we close the books on the 2025 membership campaign. A big thank you to each of you for being a part of what we can accomplish as farm bureau members in our local, state and national work for agriculture.

TABLE OF CONTENTS

Page 2: Message from the president and Upcoming Events

Page 3: Member Benefits

Page 4: Committees and ROD Update

Page 5: Board Introductions

Page 6: Kids Safety Contest Rules

Page 7: Coloring Book Page: Kids Safety Contest



UPCOMING EVENTS

State/Regional Events

- * WLC Kid's Safety Contest: Entries due May 14th
- * August 9th: Central PA YAP Night @ the Altoona Curve (RSVP by June 15th)

Local Events

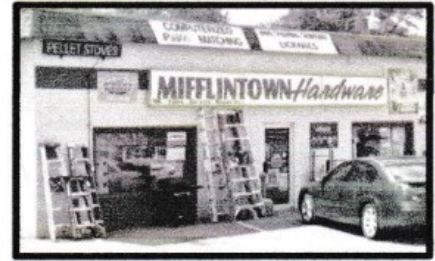
- * April: 13th-19th: Rural Road Safety
- * August 30th-September 6th: Juniata County Fair, Look for the Farm Bureau Booth!
- * September 20: Annual County Banquet

PFB Members Can Save on Farm, Household Items from MKSalesDirect.com

Shopping for tools, household and garden items or even a new computer? As a Pennsylvania Farm Bureau member, you have access to special savings from MKSalesDirect.com, an online retailer based in Juniata County. **Your PFB membership will save you 15 percent off your order at the store or from MKSalesDirect.com and free shipping on orders of \$99 or more.** Orders can be shipped to your home or they can be picked up at the company's brick-and-mortar store, Mifflintown Hardware.

According to owner Klaus Sperlich, what sets MKSalesDirect.com apart from other retailers is a huge selection combined with the customer service of a neighborhood business. "We are a local business," he said. "We are down to earth. We value our customers. You're not just a number."

To take advantage of your Farm Bureau member benefit, use the discount code PFB15 at checkout.



Are You Turning 65 This Year and Going on Medicare?



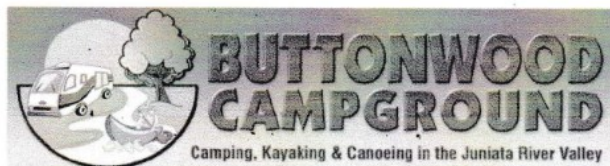
Choosing your Medicare plan can be overwhelming. It can be hard to figure out what you want, or more important, what you need.

Farm Bureau's experienced and trained staff are ready to help. At no cost to you, we can:

- Answer your questions
- Explain and compare options
- Work within your budget
- Help with informed Medicare coverage decisions

Knowledgeable. Helpful. Dedicated.

To check availability in your county call **800.522.2375**.



25% Discount

Any weeknight stay, Monday – Wednesday
Any site, any cabin, no exclusions

1515 East River Rd. Mifflintown PA 717-436-8334

Let's talk about ATV safety



Having the safety talk with your kids isn't just important—it's essential.

In 2023, 19% of deaths in off-highway vehicle (OHV) accidents were children under 16, with only 2% wearing helmets.¹ The **Let's Champion Rider Safety®** campaign, provides tips and resources for effective safety discussions and protection for young riders.



Learn more at
Nationwide.com/ATVsafety



Scan code to get
safety tips for your
young riders.

¹ U.S. Consumer Product Safety Commission.

Nationwide and the Nationwide N and Eagle are service marks of Nationwide Mutual Insurance Company. The Farm Bureau, FB and the FB National logo are trademarks of the American Farm Bureau Federation and are used with permission under license by Nationwide. © 2024 Nationwide FBO-02219A-2 (10/24)

**NATIONWIDE CERTIFIED AGENT FOR
JUNIATA COUNTY**

Reisinger Insurance, Ellitsburg PA

717-582-7457

rarinsurance@gmail.com

Committee Chair	Name	Cell
Member Relations Director	Ray Geissinger	717-348-6373
Membership & Services, Chair	Ray Geissinger	717-348-6373
Young Ag Professional (YAP), Chair	Cheyenne Hepner	717-543-7273
Women's Leadership Committee, Chair	Kyley Painter	717-513-2916
Farmers Care (Food Check-Out Day) Coordinator	Kyley Painter	717-513-2916
FARM-tastic Books Coordinator	Kyley Painter	717-513-2916
Safety Coordinator	Ray Geissinger	717-348-6373
Promotion and Education Committee, Chair	Tonya Schuh	240-565-4623
Member Services Coordinator, Chair	Jeff Berry	717-513-6189
Governmental Relations Director	Jordan Bassler	570-980-3906
Policy Development Chair	Jeff Berry	717-513-6189
Local Governmental Relations Chair	Mark Partner	717-994-3508
Environmental Coordinator	Dave Graybill	717-363-0706

CONGRATULATIONS TO
REGION 3 ROD
KENNY SECHRIST
ON HIS RETIREMENT.

We thank him and wish him a wonderful retirement.

Value of a PFB Membership: Be HEARD

- ◆ We are 27,000 members strong, we are the voice of the farmer.
- ◆ Policy development: Have your issue prioritized as a state or federal policy of the Farm Bureau
- ◆ Meet elected leadership at our Spring Meetings and Annual Meeting
- ◆ Attend other county and state events, where you will have access to various county, state, and federal leaders.
- ◆ Legislative day in Harrisburg: huge access to state elected leaders
- ◆ AFBF & PFB text alerts which go directly to your elected leaders
- ◆ Access to your counties Board of Directors, Regional Organization Director, and all PFB resources that can be used to be heard and make a difference.

New ROD Selected For Region 3

By Chanin Mountz

Pennsylvania Farm Bureau recently announced a selection has been made to fill the regional organization director vacancy slated to take place on April 1 following the retirement of Kenny Sechrist.

Chanin Rotz-Mountz of Hustontown was hired and is slated to step into the position effective April 14.

A native of northern Fulton County, she is a graduate of Forbes Road High School and Lock Haven University where she obtained a Bachelor of Arts degree in communications with an emphasis on print journalism.

She has worked for "The Fulton County News" in McConnellsburg since 1997 as a staff writer and news editor covering a myriad of topics ranging from county government and community events to sports and agriculture.

In addition to working at the "News," she is the co-owner of Pineloft Landscape and Garden Center in Hustontown, a full-service greenhouse offering plants, trees, shrubs and hardgoods as well as home heating products during the winter months.

A Farm Bureau member since 2016, Rotz-Mountz serves as the Women's Leadership Committee chair, county secretary, oversees social media and the quarterly newsletter and organizes countywide activities. She was the 2024 recipient of the Outstanding Woman In Ag Award.

In her spare time, she enjoys spending time at the barn with her chickens and cats and grows cut flowers and produce for sale locally. She also assists the Glenn Bros. with their annual sweet corn and pumpkin marketing, harvest and sales.

She has one son, Logan, who is her pride and joy and works as a music teacher.

Board Introductions



Jordan Bassler

Wife: Karena | Children: Kennedy(9) , Kamilla (4) and Josilyn (2) | Mifflintown, PA

Connection to Farming: I grew up on my family's poultry farm. After graduating from college I worked as an independent farm consultant four 4 years then moved into a Sales Agronomist role for 2 years with a retail ag company selling seed, fertilizer, and chemistry. My current position is the Portfolio and Agronomy Leader for Seed Consultants, Inc. a regional seed brand under CORTEVA Agriscience.

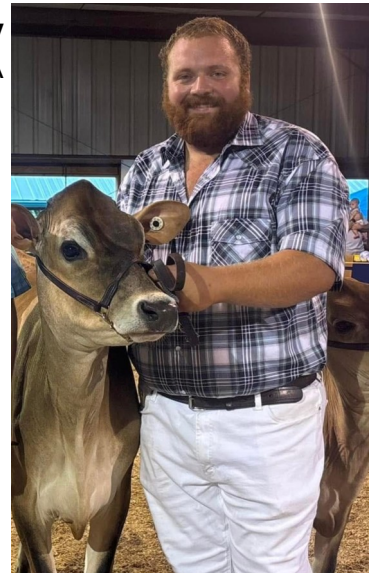
Why am I an active member: Farm Bureau works constantly behind the scenes on behalf of farmers to protect the farm family's way of life and look out for their best interests. By being a farm bureau member, we are no longer a single entity, but rather a part of something greater that has the power and resources to work on saving an industry and lifestyle that is pivotal to not only our rural economies but also the success of our country.

Kenneth Beatty

Thomsontown, PA

Why am I involved with Farm Bureau?: I have been an active member for about 5 years, and in that time, agriculture has changed a lot. With all the different rules and regulations, it is hard to keep up with what goes on in agriculture. I have gone to different meetings and to meetings with the youth in agriculture. I have met a lot of people from different parts of agriculture. Unfortunately, the average age for someone in agriculture is in there 50's. Agriculture is the #1 industry in Pennsylvania, and we have to get younger people involved so that we can keep our ground productive and green.

Connection to farming: My mom and dad had a dairy in Cumberland County before we moved to Juniata County. My brother and I were very involved with the farm and when mom and dad decided to sell the farm, we wanted to keep farming. We wanted something that wasn't so time consuming. My brother shows and breeds cows and I went into sheep breeding and crop production. My family and I have lived in Juniata County for 10 years and I started my sheep and hay operation when I was in high school. I started with 10 Katahdin sheep and now have over 150 ewes and lambs. The crops I raise include hay, soybeans, wheat, and barley.



Want more information
in between
newsletters?



Follow Juniata County Farm Bureau
on Facebook!

Richard Price Ag Equipment



**453 Laidig Road
Harrisonville, PA
717-987-3395**

We are a dealer of Diller ag equipment for over 35 years! Call us for best pricing and discounts on wagons and feeders. We also offer free shipping on SuperTarps for round bales.

Richard Price Ag Equipment provides state wide discounts to Farm Bureau members.



Above: Owen interacts with the students after the reading

Right: Morgan reads to an attentive classroom

Juniata County Farm Bureau



2025 Kids Safety Contests

Theme "From the Barn to the Field – Safety First"

Contests are open to ALL children in Juniata County, not just Farm Bureau members. It's a great way to have fun and learn about farm facts at the same time...AND...we will be offering cash prizes. A first place winner in each category will be awarded \$20 from Juniata County Farm Bureau. Second place in each category will receive \$15. All first place winners will be entered in the state PA Farm Bureau contest. Winners will be announced in Grassroots Advocate, and displayed at Ag Progress Days, and PFB's Annual Meeting in November. More information may be found at www.pfb.com/safetycontests



All entries MUST include the following information to be considered eligible: Child's name, address and phone number, Juniata County, age category and parent's name(s)

Coloring Page Guidelines.

Open to any youth ages 4 to 6 years old. Only the provided coloring page will be accepted.

Entries will be judged on the following:

- Neatness
- Appropriateness of coloring
- Appearance
- Coloring within the lines

Poster Guidelines.

Open to any youth ages 7 to 12 years old. Winners will be selected from EACH of the following age categories. 7 – 9 years old and 10 – 12 years old

Entries will be judged on the following:

- Dimensions: 8.5 x 11 inches
- Color: Must be in color
- Slogan: Ten words, or less, which addresses the theme
- Originality: Be creative. No tracing, collages, or 3-D drawings

Safety Video Guidelines

Open to any youth 13 to 18 years old.

A first and second place winner will be selected from each of the following age categories
13 – 15 years old and 16 – 18 years old

Contest Rules:

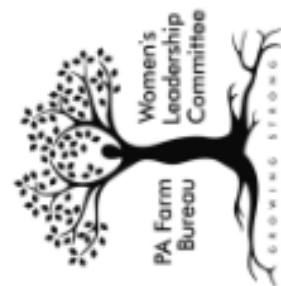
- Length: 30 – 60 seconds long
- Content: Educational information based on the theme
- Date: Must be taken within the last twelve months
- Quality: Composition, clarity.
- Entrants may only win one time in each age category.
- The following must be included on a 3x5 card: Child's name, address and phone number, Juniata county, age category, parent's name,
- a signed video release form must be included
- Video must be saved on a nonreturnable flash drive and submitted as mentioned below

All entries must be submitted to the Juniata County Women's Committee by May 14, 2025.

Mail all entries to Linda Geissinger, 9193 William Penn Hwy, Mifflintown, PA 17059



From the barn to the field - Safety first!



WGA
Safe...sh

sh...



NEWSLETTER

Juniata County Farm Bureau

157 Cleck Road Mifflintown, PA 17059

Return Service Requested

"RAISE THE BARN" FUNDRAISER

HELP US RAISE \$100K!



Pennsylvania Friends of
Agriculture Foundation™

A Charitable Organization Supported by
Pennsylvania Farm Bureau

We're raising funds to keep our
education programs alive and
thriving in Pennsylvania!

Your donation will support...

- Mobile Ag Ed Science Labs
- Immersion Lab
- Ag Literacy Week
- Remake Learning Days
- Educator's Ag Institute
- Winter Ag Workshop

and so much more!

SCAN THE QR CODE TO
DONATE



OR VISIT THE WEBSITE:

[https://
secure.qgiv.com/
for/2025p2pcampaign/](https://secure.qgiv.com/for/2025p2pcampaign/)