

Dear Bedford County Farm Bureau Members,  
Farming can be stressful, even on the best days. Last March when COVID-19 hit, farmers and ranchers got a big load of stress on top of all the issues in farming we are already used to dealing with. Few of us thought back then that we'd still be in the midst of a global pandemic 10 months later. There's an old joke about the light at the end of the tunnel being the train coming at you. It sure can feel that way some days, but I remain hopeful that we will continue to get through these challenges together.

At Farm Bureau, we want farmers and ranchers to know they are not alone when stress takes its toll. When we started focusing our attention on rural stress and mental health more than two years ago, we knew these were important matters on the farm, but we had no idea what was coming. Even without the lost markets and income as a result of the pandemic adding to farmers' stress, we had already been facing trade disruptions, extreme weather events, labor shortages--and the list goes on. It can be hard to admit when everything is not OK, but it makes a world of difference to reach out and share that burden with your friends and family.

In February 2020, Farm Bureau expanded the reach and impact of our work in addressing stress and mental health issues in farming and rural communities with the [Farm State of Mind](#) campaign from Bayer. This campaign has given us a broader platform to highlight the importance of good mental health on a national scale. It's so important for farmers, ranchers and everyone in rural communities to understand the sources of stress and be willing to talk about it.

Through our Farm State of Mind outreach, we're helping people recognize the warning signs of stress, encouraging [conversations](#), and providing resources to help farm and ranch families and rural communities.

As farmers and ranchers, we can be proud of our resilience. We get up every day, do the work that needs to be done, and just keep going no matter what. But sometimes the qualities that make us such good farmers make it very hard for us to ask for help when we are under too much stress. We've all seen this firsthand, but it doesn't have to be this way. It's OK not to be OK, and you don't have to go it alone. If you or someone you know is struggling emotionally or has concerns about their mental health, please visit the Farm State of Mind website at [farmstateofmind.org](http://farmstateofmind.org) where you can find crisis hotlines, treatment locators, tips for helping someone in emotional pain, ways to start a conversation and resources for managing stress, anxiety or depression.

We all know farmers help farmers, and this past year has been no exception. In 2021, let's all resolve to look out even more for our friends, family and neighbors, watch for warning signs of stress we may see in them, and offer a helping hand. No matter what comes our way, there's hope and help in our Farm Bureau family and in our rural communities because we are truly stronger together.

Sincerely yours,

Kenny Stanton

President, Bedford County Farm Bureau

## Member Benefits, Pesticide Applicators and Safety Webinars

Hosted by:

Blair County Farm Bureau and Nationwide®

The **FREE** 2 hour live webinars are being conducted by Nationwide's Risk Management Services Unit, offers ways to keep your business and employees safe. Those in attendance will receive 2 Core and 2 Category Points toward your Pa Pesticide Applicators License. Topics will include:

- *Pesticide Labels and Safety-Sensitive Applications*
- *Application equipment use, maintenance and calibration*
- *Safe application techniques, including drift reduction*
- *Weeds and Weed Management*
- *Insects, Diseases and Management*

The live webinars will take place:

- Tuesday, March 2
  - 9:45 am – 12:00 pm
  - 1:00 pm – 3:15 pm
- Wednesday, March 3
  - 9:45 am – 12:00 pm
  - 1:00 pm – 3:15 pm
- Thursday, March 4
  - 9:45 am – 12:00 pm
  - 7:00 pm – 9:15 pm

To register for any of these webinars go to:

<https://form.jotform.com/210174157157048>



**Nationwide®**

## **Bedford County Farm Bureau Board of Directors**

### **President**

- Kenny Stanton, 814-285-1086

### **Vice President**

- Curt Sweinhart 814-766-3705

- James Zembower 2<sup>nd</sup> VP 814-356-3561

### **Secretary**

- Kayla Sphon 814-494-6336

### **Treasurer**

- Dean Claycomb 814-623-0874

### **Directors**

- Monét Bottenfield 814-494-5819

- Paul Crooks 814-977-6268

- Noah Datillo 814-979-2468

- Ally Fisher 814-977-4285

### **Membership Chairman**

- Dave Flurie 814-977-3944

### **Newsletter Editor**

- Help needed

### **District 11 Board Member**

- Larry Cogan 814-483-0627

### **Regional Organization Director**

- Joseph Diamond 814-934-0330

### **MSC Account Supervisor**

- Shane Barkman CPA. 717-908-0778

If you are interested in getting involved with any of our county or state Farm Bureau programs or if you have a project, program or issue that farm bureau should be involved in please give any of the board members a call. We look forward to hearing from you. Thanks for being a farm bureau member.

## **Budget Proposal Would Maintain Funding for Key Agriculture Programs**

Gov. Tom Wolf's 2021-2022 state budget proposal would largely maintain funding for key agriculture programs, setting a good starting point for Pennsylvania Farm Bureau to advocate for greater investment in agriculture.

The spending plan would maintain existing funding levels for several key programs, including Penn State University's agricultural research and Cooperative Extension services and University of Pennsylvania School of Veterinary Medicine's food safety and animal welfare programs. The Department of Agriculture's General Government Operations, which provides funding for jobs and services that support Pennsylvania agriculture, would receive a \$1.3 million—or 4 percent—boost. Meanwhile, funding would be cut from some programs.

## **Help Wanted!**



The Governor's Advisory Council for Hunting, Fishing and Conservation is seeking a qualified candidate from Bedford, Blair, Cambria, Fulton, Huntingdon and Somerset counties to represent District 4 on the Pennsylvania Game Commission's board of directors. Applicants must be well-informed about wildlife conservation and restoration and be residents of the district. Commissioners receive no compensation for their service but are reimbursed for travel expenses. Individuals interested in applying should email a resume and cover letter to Robb Miller, Governor's Advisor for Hunting, Fishing and Conservation, [robmille@pa.gov](mailto:robmille@pa.gov). Applications will be accepted until Friday, March 26, 2021.

*Bedford County Farm Bureau Newsletter* is published by Bedford County Farm Bureau four times per year.

February 2021

Volume 7, Issue 1

Bedford County Farm Bureau

124 Giants Road,

Bedford, PA 15522

**Thanks for being a  
Bedford County Farm Bureau  
Member**

Check us out on Facebook and  
Instagram

## Be Sure to Listen to PFB's New Podcast



Pennsylvania Farm Bureau recently launched *Farm Focus*, a new podcast that will cover the issues facing Pennsylvania farmers and tell the stories of Farm Bureau members. Each episode will be produced by PFB staff

and will feature interviews and discussion on a variety of topics.

You can download the first three episodes now. Episodes can be found at [pfbcast.podbean.com](http://pfbcast.podbean.com), on the Podbean app, on Apple Podcasts, Google Podcasts or follow the link on the [pfb.com](http://pfb.com) homepage. Just search for "Farm Focus" or "Pennsylvania Farm Bureau." New episodes will be released monthly.



Focused on Agricultural  
and Small Businesses

717.731.3517  
[www.mscbusiness.net](http://www.mscbusiness.net)

### Plenty of Funding Available for Farm Conservation Planning

The Pennsylvania Department of Environmental Protection has lots of funding still available to reimburse farmers in the Chesapeake Bay Watershed for costs associated with developing conservation plans.

As of mid-December, the Agricultural Plan Reimbursement Program still had more than \$700,000 available to reimburse producers for the cost of hiring technical experts to develop Nutrient and Manure Management and Agricultural Erosion and Sediment Control plans. Plans developed after Jan. 1, 2019 are eligible.

More than one plan may be submitted for reimbursement, for up to a maximum of \$6,000. Plans must be submitted by May 31, 2021 to be eligible for reimbursement.

More information about the program is available at <http://bit.ly/2Nranxh>.

For additional questions, farmers in Adams, Bedford, Berks, Blair, Cambria, Chester, Cumberland, Dauphin, Franklin, Fulton, Huntingdon, Indiana, Juniata, Lancaster, Lebanon, Mifflin, Perry, Somerset, and York Counties should contact Jedd Moncavage of TeamAg at [jeddm@teamaginc.com](mailto:jeddm@teamaginc.com) or 717.721.6795.

### Welcome New Bedford County Farm Bureau Members:

Noah Datillo, Kevin Koontz, Kayla Sphon, Alan Frederick, Victor and Amy Giovanelli, Jake and Valerie Hoover, Stephen and Cathy Kackman, Patrick and Camilla Smith, Justin and Kaitlyn Leonard, Jeffery and Marlina Zembower, Boyd and Alexa Beegle, Wallace and Jamie Fleck, Michael and Michelle Wilt, Don and Shirley Ickes, McCoy's Family Farm, Edward and Bonnie Whitesell, Dale and Nada Shoemaker, Ed and Karen Ibarra, Allen and Mariah Lassinger, Thomas Reeder, Jacob and Joan Heldibridge, Robert and Sherri McDonald, Ross and Brooke Snyder, Brian Allison, Danny and Alinda Elbin, James Mearkle, Megan Anderson, Benjamin Boyer, Austin Darrow, Dwayne Hay, James and Marle Davis, Allen Detwiler, Emily O'Brien, Michael and Mariam Feathers, Jay and Heather Kaufman and Jeremiah Leonard

### Check out the New PFB.com!

Pennsylvania Farm Bureau has a brand-new website that's been updated to better serve our members. Check it out by visiting [www.pfb.com](http://www.pfb.com).

The new and improved website has been redesigned for optimal viewing on both computers and mobile devices. Improvements have also been made to help you more easily find information about Farm Bureau and Pennsylvania agriculture.

The site has a revamped Members Only section, with member benefits discount codes; electronic archives of PFB publications; important policy development, advocacy and leadership documents; and more. Rather than having to create an account and wait for it to be approved, members can now access the Members Only section instantly using their membership number, ZIP code and last name.

Among the new features is an online newsroom, where PFB will report news about our advocacy efforts, organizational news and important information for Pennsylvania farmers. You'll still be able to see these updates in *Country Focus* and our biweekly email newsletter, *Farm Bureau Express*. But the [pfb.com](http://pfb.com) newsroom will provide an option to get timely news updates without waiting for the next issue of our print or electronic publications.

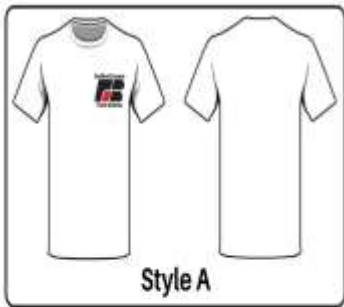
Also new are an online calendar of Farm Bureau and Pennsylvania agriculture events and overhauled pages for each county Farm Bureau to post news and updates.

Visit the new site at [www.pfb.com](http://www.pfb.com).



## Bedford County Farm Bureau T-Shirt Sale

\*All profits will go towards the Bob Detwiler Memorial Scholarship Fund\*



Style A



Style B

### Color Choices:

Black  
White  
Ash Grey

S - 4XL Available

Short Sleeve \$12

Long Sleeve \$16

1X - \$1 / 2X - \$2 / 3X - \$3 / 4X - \$4

\*Does not include S&H\*

### Payment Options:

PayPal & Venmo

\*Orders due by December 1st

Comment below or message us with your order and the following info:

Name

E-Mail Address for invoice

Shipping Address

Contact Monet Bottenfield to order or check out the order form on the county farm bureau Facebook Page:  
<https://www.facebook.com/Bedford-County-PA-Farm-Bureau>



## For your always growing side.

We help protect your farm, family, finances and future. As a Farm Bureau member, you may be eligible for a discount on your farm insurance from the #1 farm insurer.<sup>1</sup>

Learn more at [nationwide.com/pfb](http://nationwide.com/pfb).

<sup>1</sup>SNL Financial, 2017 (National) Market Share Report. Products underwritten by Nationwide Mutual Insurance Company and Affiliated Companies. Home Office: Columbus, OH 43215. Subject to underwriting guidelines, review, and approval. Products and discounts not available to all persons in all states. Nationwide, the Nationwide N and Eagle and Nationwide is on your side are service marks of Nationwide Mutual Insurance Company. The Farm Bureau and the letters FB are registered service marks of American Farm Bureau and used under license by Nationwide. © 2019 Nationwide AFC-0335AO.2 (05/19) 11091933

## Confused by healthcare options?

Farm Bureau's experienced and trained staff are ready to help. At no cost to you, we can:

- Answer your questions
- Customize and compare your options
- Work within your budget
- Help you make informed decisions

Knowledgeable. Helpful. Dedicated.



For plan and rate information,  
**Call 800.522.2375**  
[www.pfb.com/healthservices](http://www.pfb.com/healthservices)

## Bedford County Farm Bureau is working on getting local discounts for members. Here is a list of the discounts so far:

### American Trailer Company

5080 Business 2020, Bedford  
5% discount on sheds, garages  
Animal structures, Cannot be combined with 3% cash discount  
50 mile free delivery

### Barnes Garage Inc.

522 E. Penn St. Bedford  
10% off parts

### Claycomb Fence Systems, Inc

120 Ford Country Lane, Osterburg  
10% off all in-stock Priefert Ranch  
Equipment corral panels, squeeze  
chutes, sweep systems, round pens

### Esh's Storage Barns

5080 Business 2020, Bedford  
5% discount on sheds, garages  
Animal structures, Cannot be combined with 3% cash discount  
50 mile free delivery

### Interchange Parts

4588 Business 220, Bedford  
5% off everything  
except oil products

### Kaufman Metals, LLC

6146 Lincoln Hwy, Bedford  
5% off Metal Roofing

### Morral Farm Supply

54 E. 4<sup>th</sup> St. Everett  
5% off anything

### O'Reilly Auto Parts

9440 Lincoln Hwy, Bedford  
Become an O'Reilly rewards member and get 10% off any item

### Shawnee Vinyl

141 Vinyl Drive, Bedford  
10% off Windows, Siding, Doors

### Stoneham's Motorsports of Everett

5% off parts and accessories,  
\$10 off hand power tools  
\$100 off large equipment

### Whispering Hollow Estates

1409 Dunkard Hollow Rd, Pleasantville  
Wedding & Corporate Event Venue  
5% off rental packages

To use the member discount program, you must present your membership card at the time of purchase. If your business would like to participate in our local discount program please contact any county board member.

### **Applications Now Open for Beginning Farmer Tax Credit**

The first opportunity to apply for Pennsylvania's new Beginning Farmer Tax Credit opened on **Feb. 1**.

And it's important to act soon. Credits will be given on a first-come, first-served basis based on when applications are received.

Last summer, the Pennsylvania Department of Community and Economic Development launched the program, which was created by a 2019 law, which Pennsylvania Farm Bureau worked closely with state Sen. Elder Vogel, Jr. to develop and advocate for.

The application window opening Feb. 1 will be for the 2020 tax year.

The income tax credit provides an incentive to lease or sell land, buildings and/or equipment to beginning farmers.

The program allows for a one-time tax credit for property sold to a beginning farmer or a multi-year credit for property leased. The tax credit could be used to aid in family transitions—such as sales from a parent or grandparent to a child or grandchild—or to help an unrelated beginning farmer.

Beginning farmers who participate in the program must be certified by DCED by demonstrating that they have the experience or transferable skills needed to work in agriculture, have not received income from farming for longer than 10 years, and plan to farm in Pennsylvania, providing the majority of the labor and management for their operation.

Property owners can claim a credit equal to 5 percent of the sale price or fair market value (whichever is lower) of an asset sold to a beginning farmer, up to a maximum of \$32,000. For rental agreements, the credit is equal to 10 percent of gross rental income for the first, second and third years of the rental agreement, up to a maximum of \$7,000 per year. The program is capped at \$5 million for the 2020 tax year.

Pennsylvania Farm Bureau has information about the program, including state guidance documents and forms, available on its website. Visit **[www.pfb.com/BeginningFarmerTaxCredit](http://www.pfb.com/BeginningFarmerTaxCredit)** to learn more.

### **Agritourism Civil Liability**

We have restarted our efforts at bringing civil liability relief to farmers that host events and activities on their farm.

House Bill 101 was recently approved unanimously by the House Agriculture & Rural Affairs Committee and may be considered by the full House in February. If adopted, HB 101 would protect farmers for accidents that happen for circumstances beyond their control. However, farmers could still be liable for circumstances of significant negligence. In addition, farmers would be required to post multiple warning signs and either obtain a waiver, or put a waiver on the back of an admission ticket. This legislation is identical to a version that passed the House last session.

### **Milk Truck Hauling**

The House Agriculture & Rural Affairs Committee also approved House Bill 186 that would provide a clear exemption to milk trucks from commercial weather bans that have been enacted in recent years. If enacted, milk truck haulers would be able to continue to use major interstates during travel bans to ensure that milk is picked up from farms and delivered to processing plants in a timely fashion. Over the past three years, PennDOT and other state agencies have enacted bans on commercial trucks from being on interstates during weather emergencies.

### **Other initiatives**

Pennsylvania Farm Bureau is working with lawmakers on several other pieces of legislation:

Creating a statewide system to drive conservation dollars to county conservation districts for on-farm conservation practices that improve local water quality.

Providing clear exemptions for farmers that want to use their barns and buildings for social events, such as weddings, from requirements to install a sprinkler system.

Tax measures including exempting farmers from having to pay unemployment taxes on H2A workers; allowing landowners to use a simplified method for claiming deductions for oil and natural gas leases; providing clear exemptions from sales tax requirements for farmers purchasing multi-purpose agriculture vehicles (MAVs).

# There's More to Membership

## Experience the value of belonging.

### United & Growing



THE LINCOLN  
MOTOR COMPANY

[www.pfb.com](http://www.pfb.com) to download certificate

Must be a member for 30+ days; vehicle not always available; some limitations may apply

Exclusive cash bonus toward the purchase or lease of an eligible new vehicle. \*\$500 off Ford, \$750 off Lincoln



[www.johndere.com/farmbureau](http://www.johndere.com/farmbureau)

Only available at John Deere dealerships



Account # 855488417

[www.grainger.com/farmbureau](http://www.grainger.com/farmbureau)



Code: 11361045  
National Fleet Discount



Must show membership card  
Discounts may apply



Code: PFB-7650-085  
855.692.8330  
[www.nrg.com](http://www.nrg.com)



[www.amerigas.com](http://www.amerigas.com)  
Contact your nearest dealer



Code: 1386181PHL  
[www.stamps.com](http://www.stamps.com)  
Online purchase



RWD Div. Code: A298838  
800.331.4212  
[www.avis.com](http://www.avis.com)



Code: Farmbureau  
1.800.LIFELOCK  
[www.lifehack.com](http://www.lifehack.com)



Special Rate ID: 00209780  
800.258.2847



Corporate Rate: 800.000.0294  
877.670.7088



Rebate: 10% off Code: PAFB  
New \$10 off Code: PAFB39  
[www.lancasterfarming.com](http://www.lancasterfarming.com)



1.800.8-SADDLE  
Membership number required



[www.caseih.com](http://www.caseih.com)  
to download certificate



[www.cat.com](http://www.cat.com)  
to download certificate



[www.farmbureaubank.com](http://www.farmbureaubank.com)



ECO Offer Code: Y775738  
800.527.0700  
[www.budget.com](http://www.budget.com)



Code: Group 946  
[www.scriptsave.com](http://www.scriptsave.com)



1.888.487.7447  
[www.clearvalue.com](http://www.clearvalue.com)



800.522.2375  
[www.hsa.com](http://www.hsa.com)



717.731.3517  
[www.mscusa.com](http://www.mscusa.com)



717.232.5000



Nationwide® offers a variety of insurance and financial services to Farm Bureau members including farm\*, auto\*, home\*, pet\*, travel\*, powersports, commercial and life insurance.

\*Subject to policy terms and conditions.

To learn more, contact your local Nationwide agent or visit [nationwide.com/pfb](http://nationwide.com/pfb).

**ADD Insurance:** Group Accidental Death & Dismemberment policy for each qualified member in family. Immediate value \$1000. Annual increase \$300 for consecutive renewals before January 1 each year to maximum \$3100 value. \*Subject to policy terms and conditions.

5% off advertising rates in PFB publications.  
Contact advertising coordinator for details.

**COUNTRY  
FOCUS**

They sustain us by local  
and Farm Bureau ideas

**Pennsylvania**

Starts about farming  
land and destinations

A 1/2 portion of annual dues entitles a subscriber to a PFB publication. Former members receive 11 issues of the Country Focus magazine and "Interest of Farm Bureau" magazine. Issues of the quarterly Pasture Pennsylvania magazine. Applicants receiving "member", "partner farmer" or "agribusiness" as the membership application are classified as "member" members. Should no dues be stated and no term noted, not be listed, member will be classified as "Interest of Farm Bureau" with questions regarding membership classification.



Save even more with County Farm Bureau Local Discounts!

For a complete list of discounts offered by +375 locally-owned businesses in nearly 50 counties visit [pfb.com/localdiscounts](http://pfb.com/localdiscounts).

Local discounts not offered in all counties

**Pennsylvania Farm Bureau**

510 S. 31st Street PO. Box 8736  
Camp Hill, PA 17001-8736  
717.761.2740  
[www.pfb.com](http://www.pfb.com)



## **Nationwide is on Your Side**

Nationwide Insurance began in 1925 as the Farm Bureau Mutual Automobile Insurance Company with the goal of providing quality auto insurance at low rates for Farm Bureau members in Ohio. Nine state Farm Bureaus promote Nationwide and provide discounts to members. Other than Ohio, Pennsylvania Farm Bureau has had the longest relationship with Nationwide than the other eight state Farm Bureaus.

The **Nationwide appointed agencies** in Bedford County are:

**Monét A. Bottenfield**  
**Good & Associates Inc.**

343 Bedford St  
Claysburg, PA 16625-8231  
(814)239-2205 monet@goodinsuranceagencies.com

**Jonathan T May**  
**Kyle Miller & Associates**

208 Hope Road  
Buffalo Mills, PA 15534  
(703)855-0397 jmay@kmainsurancegroup.com

**Darin Meck**  
908 Spruce St  
Roaring Spring, PA 16673-1535  
(814)224-2166

**Gary Shetter**  
127 W Main St,  
Everett, PA 15537  
(814) 652-2711 shetterinsuranceagency@gmail.com

**Insurance Office Incorporated**  
410 East Central Way  
Bedford, PA 15522  
814-310-9588 wayne@ioiofficeinc.com

**Reed, Wertz & Roadman**  
702 West Pitt St  
Bedford, Pa 15522  
814-623-1111



Last June, Direct Action Everywhere, an anti-animal agriculture activist group, launched "Project Counterglow" an interactive map with locations of farms across the U.S. While the page/group hasn't been as active recently, they are ramping up with their "Febru-Dairy" campaign. They are asking their followers to submit specific information about farms including the address, photos and video, news clips, and social media links. We expect they will use this information for further activism activity.

***Please do not share this post /information in public groups (if you share in private groups, do so via screen shot, so as not to drive more traffic to the site), or mention the campaign in your social media efforts, as this will help draw attention to their campaign.***

**What can you do?** Our advice remains – the best people to tell the true story of animal agriculture are farmers themselves, in their own voices. Continue to tell the work you do with your animals, employees, and the environment. This good work helps make deposits in your credibility bank and builds supporters, both in and out of your community.

As always, incidents like these are a good reminder to review farm security measures. Below are some tips from the Animal Agriculture Alliance to help keep your farm secure. Your co-op or milk handler and/or state Farm Bureau office may also have other resources.

### **Keep Your Farm Secure**

The most important step to take is ensuring that you have no vulnerabilities in terms of animal care or environmental impact that could be exploited.

It's about "YouTube-proofing" your operation and making sure there is nothing going on that you wouldn't want to be broadcasted to the world. Activists have shown they are more than willing to exaggerate, fabricate or take things out of context, so we can't give them any ammunition.

### **Make Yourself a Harder Target**

- Take basic steps to secure your farm and facility, making it more difficult to access by intruders. These include: No Trespassing signage, motion-sensor lighting, security cameras, gates, fencing, etc.
- Consider what is visible from the road. Some groups are encouraging activists to constantly monitor farms and plants from public property to see if they can obtain photos or videos that can be used. Consider the "curb appeal" of your operation and make any possible changes to prevent sensitive procedures from being viewed from public land or roadways.
- Implement a policy for handling visitors as well as requests for information. Activists will use any excuse to try to access a farm or facility, including misrepresenting their identity. Do not allow any unauthorized visitors to come onto your property for any reason and do not take claims at face value. Ask for credentials or identification and verify any claims (for example, call the company they claim to represent). Make sure all family members and employees know what your visitor process is and follow it every single time.
- Be cautious with hiring. Activists are constantly trying to get hired on farms and in plants. Never cut corners in your hiring process regardless of how urgently you need workers. Have a formal process including a written application and carefully check references by calling past employers' main number –not the one listed on their application.

If you have questions, please contact Beth Meyer, director of consumer confidence for American Dairy Association North East, at [bmeyer@milk4u.org](mailto:bmeyer@milk4u.org) or 315.491.3892.



Bedford County Farm Bureau  
124 Giants Road  
Bedford, PA 15522

*Address Service Requested*

Upcoming Events:

- ❖ February 16
- ❖ March 2-4
- ❖ March 14
- ❖ March 15-19
- ❖ March 17
- ❖ April 18-24

County Farm Bureau Board Meeting  
Virtual Pesticide Updates  
Day Light Saving Time Begins  
Ag Literacy Week  
Region 4 Farm Bureau Day  
Rural Road Safety Week