



Bedford County Newsletter

Quarterly Newsletter of Bedford County Farm Bureau



Volume 6, Issue 4

December 2020

Dear Bedford County Farm Bureau Members,

Wow, what a year! Who would have ever thought there would be global pandemic, ag products being dumped, low commodity prices, and to top it off a toilet paper shortage. Even with all these things happening your Farm Bureau is still out working for you. Your county board continues to meet, discuss and work on issues that affect our industry. Farm Bureau leaders and staff are still working with legislators and regulators on your behalf. Some of the issues that have been addressed are: Covid-19 Relief, Broadband, Support for Great Flexibility for Ag Haulers, Agritourism and Watershed Implementation Plan for PA for the "Phase 3" period.

You are a vital part of the largest, most effective and respected Farm Organization in the nation. Without you, the member, our organization would not have the influence and clout and, yes, the financial resources to able to advocate for the rural people at every level of government and regulatory agency in this nation. That is what Farm Bureau is all about and has been for over 100 years. Simply put, our organization's mission is to get things done for our members that we cannot done on our own. The Mission Statement of the Pennsylvania Farm Bureau is "Growing Communities. Many Voices. United Vision." If you have not renewed your membership, please do it now.

It is my honor and privilege to recently have been elected by our County Board of Directors to serve as your County President. I would like to thank Curt Sweinhart for his job as president and being a mentor to me as I begin my term. Also, thanks to Cristy Strayer for her time as secretary. I am looking forward to working with the board this year. We now have three new Young Ag Professionals on our board; Kayla Sphon, Ally Fisher and Noah Datillo, and have great hopes to develop and establish a Young Ag Professional group as we enter 2021. I would also like to welcome Paul Crooks to our board. Our sympathy goes out to the family of Naomi Sollenberger (county board member) who went to be with our Lord. Her support for Agriculture Education will be missed.

I wish you all a very Merry Christmas, and a Happy and Healthy New Year!

Sincerely yours,
Kenny Stanton
President, Bedford County Farm Bureau

MEMBER BENEFITS AND PESTICIDE APPLICATORS AND SAFETY TRAINING SESSION HOSTED BY: FARM BUREAU AND NATIONWIDE®

2021 VIRTUAL SESSIONS:

**TUESDAY, MARCH 2ND
9:45 AM – 12:00 PM**

**WEDNESDAY, MARCH 3RD
1:00 PM - 3:15 PM**

**THURSDAY, MARCH 4TH
7:00 PM – 9:15 PM**

These 2-hour sessions conducted by Nationwide's Risk Management Services Team, offers ways to keep your business and employees safe. Those in attendance will receive 2 Core and 2 Category Points toward your Pa Pesticide Applicators License.

Topics include:

- *Pesticide Labels and Safety-Sensitive Applications*
- *Application equipment use, maintenance and calibration*
- *Safe application techniques, including drift reduction*
- *Weeds and Weed Management*
- *Insects, Diseases and Management*

Watch for information in February on how to register.

Bedford County Farm Bureau Board of Directors

President

- Kenny Stanton, 814-285-1086

Vice President

- Curt Sweinhart 814-766-3705

- James Zembower 2nd VP 814-356-3561

Secretary

- Kayla Sphon 814-494-6336

Treasurer

- Dean Claycomb 814-623-0874

Directors

- Monét Bottenfield 814-494-5819

- Paul Crooks 814-977-6268

- Noah Datillo 814-979-2468

- Ally Fisher 814-977-4285

Membership Chairman

- Dave Flurie 814-977-3944

Newsletter Editor

- Help needed

District 11 Board Member

- Larry Cogan 814-483-0627

Regional Organization Director

- Joseph Diamond 814-934-0330

MSC Account Supervisor

- Shane Barkman CPA. 717-908-0778

If you are interested in getting involved with any of our county or state Farm Bureau programs or if you have a project, program or issue that farm bureau should be involved in please give any of the board members a call. We look forward to hearing from you. Thanks for being a farm bureau member.

AFBF To Hold Convention Virtually

The American Farm Bureau Federation's 102nd Convention will be held virtually.

The January event had been planned for San Diego; however, all events at the convention center have been canceled through the end of January, due to the COVID-19 pandemic. The event will now be held Jan. 10 through 13 in a virtual format.

"Our top priority at every Farm Bureau gathering is the safety of our attendees and staff," AFBF President Zippy Duvall said. "While we are saddened to not meet in person for this convention, we are eager to bring this event safely to farm and ranch homes across the country and excited to offer the same top-level content our members have come to expect from our in-person events."

The virtual convention will bring together farmers, ranchers and industry experts to discuss the top issues facing agriculture, including the impact of COVID-19, sustainability and the future of the supply chain, and will feature keynote speakers who inspire and motivate grassroots action.

Registration for the 2021 American Farm Bureau Virtual Convention will open later this year and will be free to all attendees. Further details on the event can be found at <https://annualconvention.fb.org>.

New Farm Bureau Program Mentors Veteran Farmers

The Farm Bureau Patriot Project is a mentorship program that connects military veteran beginning farmers with experienced Farm Bureau member farmers. The program was piloted in Arkansas and Texas in 2016 and is now available as a program option to all state Farm Bureaus.

Through the Farm Bureau Patriot Project, American Farm Bureau Federation works with state Farm Bureaus to identify military veterans and Farm Bureau mentors and facilitate long-term mentorship relationships.

"Many people don't realize that 44 percent of military personnel come from rural communities," said American Farm Bureau Federation President Zippy Duvall. "The men and women who worked so hard to defend our national security are fully equipped to ensure our food security. Our military veterans come back home to their communities equipped with discipline, determination and the willpower to do very difficult things. And farming is a difficult occupation."

In addition to the Patriot Project, Farm Bureau supports veterans' involvement in agriculture through its partnership with the Farmer Veteran Coalition. FVC is the nation's largest nonprofit organization assisting veterans and active duty members of the U.S. armed forces embark on careers in agriculture.

Pennsylvania Farm Bureau also helps support veteran farmers in the Keystone State through the Pennsylvania Veteran Farming Project, which works in partnership with the Pennsylvania Friends of Agriculture Foundation (PFB's charitable foundation) and USDA to provide resource referrals, education, and connections for military veterans who are beginning farming.

Learn more about the Patriot Project at

www.fb.org/programs/patriot-project.

Bedford County Farm Bureau Newsletter is published by Bedford County Farm Bureau four times per year.

December 2020

Volume 6, Issue 4

Bedford County Farm Bureau

124 Giants Road,

Bedford, PA 15522

Confused by healthcare options?

Farm Bureau's experienced and trained staff are ready to help. At no cost to you, we can:

- Answer your questions
- Customize and compare your options
- Work within your budget
- Help you make informed decisions

Knowledgeable. Helpful. Dedicated.



For plan and rate information,

Call 800.522.2375

www.pfb.com/healthservices

Be Sure to Listen to PFB's New Podcast



Pennsylvania Farm Bureau recently launched *Farm Focus*, a new podcast that will cover the issues facing Pennsylvania farmers and tell the stories of Farm Bureau members. Each episode will be produced by PFB staff and will feature interviews and discussion on a variety of topics.

You can download the first three episodes now. Episodes can be found at pfbcast.podbean.com, on the Podbean app, on Apple Podcasts, Google Podcasts or follow the link on the pfb.com homepage. Just search for "Farm Focus" or "Pennsylvania Farm Bureau." New episodes will be released monthly.

Simple Form Available for Farmers Who Received Dean Foods Letters to Avoid Payment



Pennsylvania Farm Bureau has been working closely with the Pennsylvania Milk Marketing Board (PMMB) and American Farm Bureau Federation (AFBF) to advocate for dairy producers who received letters last month demanding payments as part of the Dean Foods bankruptcy case.

Independent producers who previously shipped milk to Dean received the letters the last week of November from ASK LLP, a bankruptcy law firm representing Dean's estate, demanding a partial refund of past milk checks.

American Farm Bureau last week [sent a letter](#) to ASK LLP, asserting that there is no legal basis for the firm to be demanding payments from farmers and [calling the maneuver a "predatory shakedown."](#) Farm Bureau's letter demanded that the firm retract its demands by notifying each affected farmer within 10 business days, returning any funds already received, and ceasing any litigation against farmers who did business with the company. At the same time, PMMB engaged the Pennsylvania Attorney General's Office and contacted ASK LLP questioning the legal basis for the demand.

As a result of these efforts, ASK LLP worked with PMMB on a simple, one-page form that farmers can fill out to demonstrate that the payments they received for milk sold to Dean were part of routine business and, therefore, do not need to be paid back.



Curt Sweinhart, Kenny Stanton and Monet Bottenfield represented the county at the PFB Annual Meeting Session at Hoss's, Ebensburg, November 16th and 17th. They evaluated, discussed and voted on over 140 proposed resolutions.



For your always growing side.

We help protect your farm, family, finances and future. As a Farm Bureau member, you may be eligible for a discount on your farm insurance from the #1 farm insurer.¹

Learn more at nationwide.com/pfb.

¹S&P, Financial, 2017 (National) Market Share Report. Products underwritten by Nationwide Mutual Insurance Company and Affiliated Companies. Home Office: Columbus, OH 43215. Subject to underwriting guidelines, review, and approval. Products and discounts not available to all persons in all states. Nationwide, the Nationwide N and Eagle and Nationwide is on your side are service marks of Nationwide Mutual Insurance Company. The Farm Bureau and the letters FB are registered service marks of American Farm Bureau and used under license by Nationwide. © 2019 Nationwide AFC-0315AD.2 (05/19) 110919.33

Adopted State Budget is Good News for Agriculture

In the final days of their legislative session, the Pennsylvania General Assembly adopted a budget that will fund the state through June 30, 2021.

The spending plan does not call for any broad-based tax increases and instead relies on federal stimulus dollars and transfers from special accounts to fund operations.

Nearly all of agriculture's priority line items will receive flat funding through the rest of the fiscal year. The Department of Agriculture will receive roughly \$600,000 less in spending than the previous fiscal year, and the department's disaster preparedness line will receive a \$1 million cut.

In addition, the state is setting aside grant money to aid county and community fairs that had to cancel due to COVID-19. Those fairs will be able to apply for reimbursements for money they typically would have received for hosting agriculture-specific events and contests.

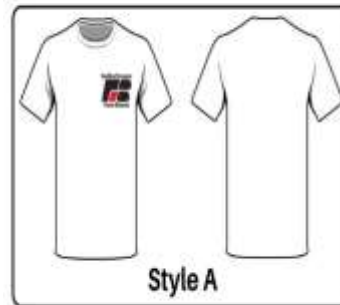
Work on the state's 2021-2022 budget will start in February when Gov. Tom Wolf unveils his next spending plan.

Golden Owl Award

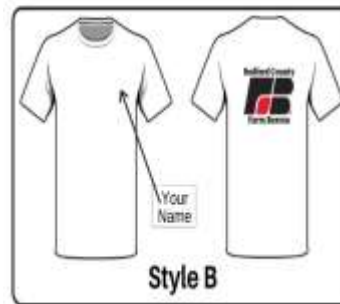
Nominate an outstanding ag educator for the Golden Owl Award, presented by Nationwide, PFB and Pennsylvania FFA. Go to the PFB website for more information. Presented by Nationwide®, the [Pennsylvania FFA](#) and the [Pennsylvania Farm Bureau](#)®, the Golden Owl Award recognizes agricultural educators across Pennsylvania for their tremendous contributions to helping the next generation of agricultural leaders. Students, fellow teachers and other supporters can nominate their favorite agricultural teacher and summarize what makes him or her the best in the state.

Bedford County Farm Bureau T-Shirt Sale

All profits will go towards the Bob Detwiler Memorial Scholarship Fund



Style A



Style B

Color Choices:

Black
White
Ash Grey

S - 4XL Available

Short Sleeve \$12

Long Sleeve \$16

1X - \$1 / 2X - \$2 / 3X - \$3 / 4X - \$4

Does not include S&H

Payment Options:

PayPal & Venmo

*Orders due by December 1st

Comment below or message us with your order and the following info:

Name

E-Mail Address for invoice

Shipping Address

Contact Monet Bottenfield to order or check out the order form on the county farm bureau

Facebook Page:

<https://www.facebook.com/Bedford-County-PA-Farm-Bureau>

Thanks for being a
Bedford County Farm Bureau
Member

Check us out on Facebook and
Instagram

Bedford County Farm Bureau is working on getting local discounts for members. Here is a list of the discounts so far:

American Trailer Company
5080 Business 2020, Bedford
5% discount on sheds, garages
Animal structures, Cannot be
combined with 3% cash discount
50 mile free delivery

Barnes Garage Inc.
522 E. Penn St. Bedford
10% off parts

Claycomb Fence Systems, Inc
120 Ford Country Lane, Osterburg
10% off all in-stock Priefert Ranch
Equipment corral panels, squeeze
chutes, sweep systems, round pens

Esh's Storage Barns
5080 Business 2020, Bedford
5% discount on sheds, garages
Animal structures, Cannot be
combined with 3% cash discount
50 mile free delivery

Interchange Parts
4588 Business 220, Bedford
5% off everything
except oil products

Kaufman Metals, LLC
6146 Lincoln Hwy, Bedford
5% off Metal Roofing

Morral Farm Supply
54 E. 4th St. Everett
5% off anything

O'Reilly Auto Parts
9440 Lincoln Hwy, Bedford
Become an O'Reilly rewards
member and get 10% off any
item

Shawnee Vinyl
141 Vinyl Drive, Bedford
10% off Windows, Siding, Doors

Stoneham's Motorsports of Everett
5% off parts and accessories,
\$10 off hand powertools
\$100 off large equipment

Whispering Hollow Estates
1409 Dunkard Hollow Rd, Pleasantville
Wedding & Corporate Event Venue
5% off rental packages

To use the member discount program, you must present your membership card at the time of purchase. If your business would like to participate in our local discount program please contact any county board member.



Brooke Gochmour, Bedford County Dairy Princess, Monet Bottenfield and Kenny Stanton welcome guests to the showing of "Farmland" at Downtown on the Farm at the Silver Lining Drive-In



**2nd Annual
HOLIDAY
NIGHTS OF
Lights**

Board Members Ally Fisher and Noah Datillo volunteered



MSC
BUSINESS SERVICES
Affiliated with Pennsylvania Farm Bureau

**Focused on Agricultural
and Small Businesses**

717.731.3517
www.mscbusiness.net

There's More to Membership

Experience the value of belonging.

United & Growing



THE LINCOLN
MOTOR COMPANY

www.pfb.com/ford to download certificate

Must be a member for 30+ days; identity not always verifiable; some limitations may apply

Exclusive cash bonus toward the purchase or lease of an eligible new vehicle, *\$500 off Ford, *\$750 off Lincoln



www.johndere.com/farmbureau

Only available at John Deere dealerships



Account# 8556488417

www.grainger.com/farmbureau



Code: 11361045

National Fleet Discount



Must show membership card
Exceptions may apply



Code: PFB-7600-085

855.692.8330

www.nrg.com/farmbureau



www.amerigas.com

Contact your member dealer



Business
Active Only

Code: 1586181RHL

www.stamps.com/farmbureau

Online purchases



AWD Div. Code: A298838

800.331.1212

www.avis.com/pfb



Code: Farmbureau

1.800.LIFELOCK

www.lifelock.com



Special Rate ID: 00209760

800.258.2847



Corporate Rate: 0000003941

877.670.7088



Rebate: 10% off Code: PAFB

New ID off Code: PAFB39

www.lancasterfarming.com



1.800.8-SADLE

Membership number required



www.caseih.com

to download certificate



www.cat.com

to download certificate



www.aaam.com



ECO Offer Code: Y775738

800.527.0700

www.budget.com/pfb



Code: Group 946

www.scriptsave.com



1.888.487.7447

www.clearvalue.com



800.822.2378

www.hsc.com



717.731.3517

www.mscusa.com



717.232.5000



Nationwide® offers a variety of insurance and financial services to Farm Bureau members including farm*, auto*, home*, pet*, travel*, powersports, commercial and life insurance.

*Subject to policy terms and conditions.

To learn more, contact your local Nationwide agent or visit www.na.com/pfb

AD&D Insurance: Group Accidental Death & Dismemberment policy for each qualified member in family. Immediate value \$1000. Annual increase \$300 for consecutive renewals before January 1 each year to maximum \$3100 value. *Subject to policy terms and conditions.

5% off advertising rates in PFB publications.
Contact advertising coordinator for details.

**COUNTRY
FOCUS**

Stay current on ag, local
and Farm Bureau news

Pennsylvania

Stays abreast farming
local and destinations



**Save even more with County Farm
Bureau Local Discounts!**

For a complete list of discounts offered by
+375 locally-owned businesses in nearly
50 counties visit pfb.com/localdiscounts

Local discounts not offered in all counties

PA Pennsylvania Farm Bureau

510 S. 31st Street PO. Box 8736

Camp Hill, PA 17001-8736

717.761.2740

www.pfb.com

A 5% portion of annual dues
entitles a member subscriber
to a PFB publication. Farmer
members receive 11 issues of the
Country Focus magazine and
"Virtual Farm Bureau" members
receive 8 issues of the quarterly
e-Publication Pennsylvania magazine.
Applicants selecting "farmer",
"part-time farmer" or "ag/business"
on the membership application
are classified as "farmer" mem-
bers. Should no box be checked
and no term being met be listed,
applicant will be classified as
"Virtual Farm Bureau". Please contact
your nearest Farm Bureau unit
with any questions regarding membership
classification.

Agritourism, COVID-19 Immunity, Vetoed

Nationwide is on Your Side

Nationwide Insurance began in 1925 as the Farm Bureau Mutual Automobile Insurance Company with the goal of providing quality auto insurance at low rates for Farm Bureau members in Ohio. Nine state Farm Bureaus promote Nationwide and provide discounts to members. Other than Ohio, Pennsylvania Farm Bureau has had the longest relationship with Nationwide than the other eight state Farm Bureaus.

The **Nationwide appointed agencies** in Bedford County are:

Monét A. Bottenfield

Good & Associates Inc.

343 Bedford St
Claysburg, PA 16625-8231
(814)239-2205 monet@goodinsuranceagencies.com

Jonathan T May

Kyle Miller & Associates
41 South Market St, Ste 201
Elizabethtown, PA 17022
(703)855-0397 jmay@kmainsurancegroup.com

Darin Meck

908 Spruce St
Roaring Spring, PA 16673-1535
(814)224-2166 meckd1@nationwide.com

Gary Shetter

127 W Main St,
Everett, PA 15537
(814) 652-2711 shetterinsuranceagency@gmail.com

Insurance Office Incorporated

410 East Central Way
Bedford, PA 15522
814-310-9588 wayne@ioiofficeinc.com

Reed, Wertz & Roadman

702 West Pitt St
Bedford, Pa 15522
814-623-1111

Gov. Tom Wolf vetoed sweeping COVID-19 immunity legislation that contained language that would have provided civil immunity exemptions to agritourism businesses.

House Bill 1348, drafted to provide limited immunity relief to farmers that host public events and activities on their farms, was amended into a larger civil immunity bill in the final days of the General Assembly's two-year session.

Pennsylvania Farm Bureau is disappointed with Gov. Wolf's decision and will seek to address agritourism liability reform again this legislative session. The governor's veto memo expressed objections to the COVID-19-related provisions but did not mention any qualms with the legal protections for agritourism.

House Bill 1348 was approved by the full House 120-81 before it was amended into HB 1737 while in the Senate. HB 1348 had bipartisan support as it moved through the legislative process. However, the bill became more controversial when it was amended into a larger bill aimed at COVID-19 immunity.

House Bill 1348 would have provided farmers limited civil immunity from accidents that occurred beyond their ability to control, such as trip and fall accidents in corn mazes. In order to receive those protections, farmers would be required to post multiple warning signs and also have visitors sign waivers, or place waivers on the back of admission tickets.

House Bill 1348 was approved by the full House 120-81 before it was amended into HB 1737 while in the Senate. Pennsylvania Farm Bureau wants to thank the following Democrats who crossed party lines to vote in favor of this legislation: Danilo Burgos, Frank Burns, Pam DeLissio, Bill Kortz, Bridget Kosierowski, Danielle Otten, Eddie Day Pashinski, Adam Ravenstahl, Harry Readshaw, Christina Sappey, Pam Snyder, Wendy Ullman, Joe Webster, Dan Williams and Rosita Youngblood.

Pennsylvania Farm Bureau wants to especially thank Representative Barb Gleim, who introduced HB 1348, and lead the charge to get this legislation passed. In addition, Representatives Mark Keller, Marty Causer and Kerry Benninghoff worked to make sure the bill was voted on in the House before the legislative session ended. Farm Bureau also thanks Senate Majority Leader Jake Corman for working to get agritourism legislation added into the larger immunity legislation that was eventually sent to the Governor.

Pennsylvania Farm Bureau will work with lawmakers to reintroduce agritourism legislation in the coming months.





Bedford County Farm Bureau
124 Giants Road
Bedford, PA 15522

Address Service Requested

Upcoming Events:

- | | |
|-----------------|---|
| ❖ December 31 | Deadline for Golden Owl Award Applications |
| ❖ January 5-7 | Keystone Farm Show |
| ❖ January 9-16 | Virtual PA Farm Show |
| ❖ January 19 | Bedford County Farm Bureau Board Meeting |
| ❖ January 10-13 | American Farm Bureau Virtual Annual Meeting |
| ❖ February 16 | Bedford County Farm Bureau Board Meeting |
| ❖ March 2-4 | Virtual Pesticide Updates |
| ❖ March 15-19 | Ag Literacy Week |